

# Dental Products

# Report



## This won't take long

Pola Office+ whitening system whitens teeth quickly, safely, and effectively.

Information provided by SDI (North America) Inc.

### Technique

Pola Office+

In-office tooth whitening system

#### Features

- Fast and simple to use: 3 x 8 minute applications
- Uses a double barrel syringe system—no mixing required
- Sticky gel formula maximizes adhesion and the bleaching effect
- 37.5% hydrogen peroxide
- Contains potassium nitrate to inhibit sensitivity
- Can be used with or without a light
- Free marketing materials in multiple languages
- Patient education Website



**SDI (North America) Inc.**  
800-228-5166  
[www.sdi.com.au](http://www.sdi.com.au)  
[www.polawhite.com](http://www.polawhite.com)

In about half an hour, patients can walk in and out of the dentist's office with a whiter, brighter smile. **The Pola Office+** in-office tooth whitening system, featuring a 37.5% hydrogen peroxide base, whitens teeth in 24 minutes—resulting in reduced chair time for increased patient comfort and satisfaction.

This time-saving whitening tool comes with a dual barrel syringe system that mixes as clinicians apply the bleach, providing a consistent blend of freshly activated gel. There's no need for mixing trays or for mixing. The quick, easy system features a fine tip syringe that makes application quick and easy, even in tight spots.

The gel is formulated for enhanced patient comfort, featuring desensitizing properties that prevent post-op sensitivity. And it's up to clinicians if they want to use a bleaching light or not—any heat-emitting curing light works just as well, saving clinicians from needing to buy special, costly lights.

This whitening system is available in one, or three patient kits, and is one of many offerings in the company's product lines. Other whitening products include Pola Office, Pola Night, Pola Zing, Pola Paint and Soothe.

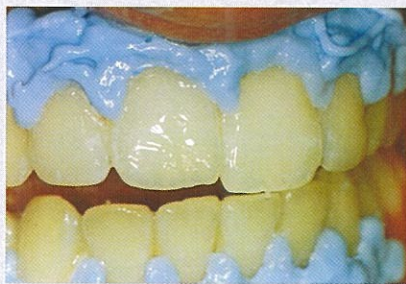
The following clinical procedure illustrates how Dr. Jati Heer of Coventry, UK, used the Pola Office+ system to whiten a patient's smile.

## The procedure

1. Determine and record the patient's pre-operative shade. Follow the Vita shade guide arrangement according to degree of brightness (**Fig. 1**).
2. Clean the teeth using flour based pumice.
3. Place the cheek retractor and cover the exposed lip surface with petroleum gel.
4. Dry the teeth and apply Gingival Barrier to both arches, slightly overlapping enamel and interproximal spaces (**Figs. 2 and 3**).
5. Light cure using a fanning motion for 10 to 20 seconds until the Gingival Barrier is cured.
6. Firmly attach a mixing tip to the syringe away from the patient. Dispense a small amount of the gel onto a mixing pad to ensure adequate mixing (**Fig. 4**).
7. Directly apply a **thin** layer of gel to all teeth undergoing treatment (**Fig. 5**). *Note:* Graduation on the syringe indicates the recommended amount per application.
8. Leave the gel on for 8 minutes. A curing light may be used (**Fig. 6**). Refer to the light manufacturer's recommendations.
9. Suction off gel using a surgical aspirator tip.
10. Complete steps 7 through 9 three times. A fourth time is optional.
11. After the last application, suction off all gel. Wash with water and apply suction.
12. Remove Gingival Barrier by lifting it from one end.
13. The final result took the shade from A3 to B1 (**Fig. 7**).



**Fig. 4** After a mixing tip is attached, a small amount of gel is dispensed onto a mixing pad.



**Fig. 5** Freshly mixed gel is applied.



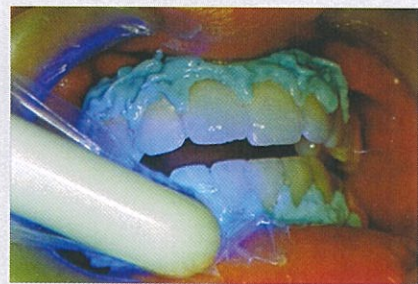
**Fig. 1** The pre-operative shade is recorded. This patient has intrinsic and extrinsic stain. The original shade is A3.



**Fig. 2** Apply Gingival Barrier paste.



**Fig. 3** The soft tissue is protected by the Gingival Barrier. Light cure for 10 to 20 seconds.



**Fig. 6** A curing light is used. This step is optional.



**Fig. 7** The final result, from shade A3 to B1.